



News Release

16:00 (GMT +8)
July 5, 2011
DGBAS, Taipei



行政院主計處

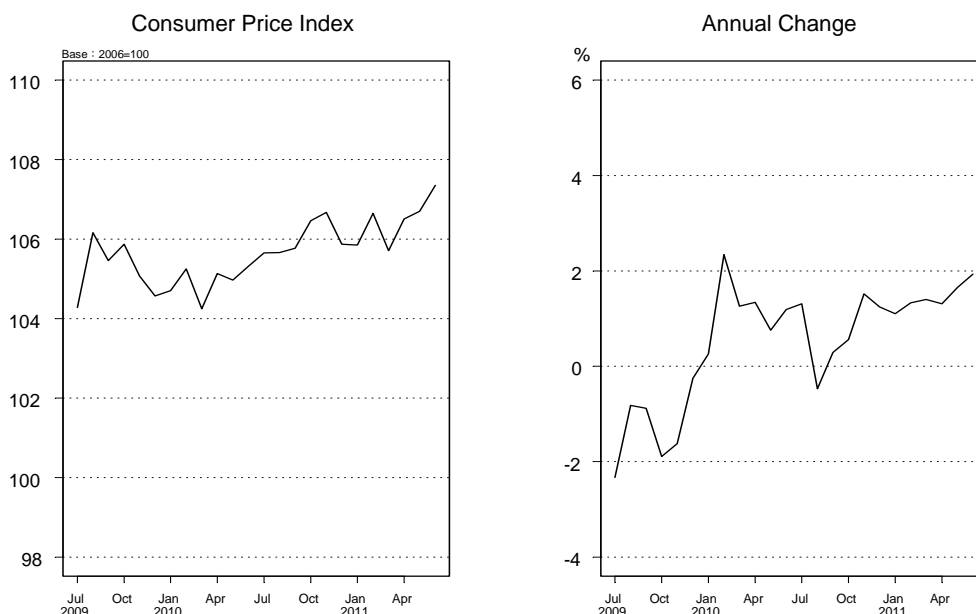
The Price Indices for June 2011

Consumer Price Indices (CPI)

The CPI in June 2011 was 107.35 (2006=100), rose 0.61% from previous month, mainly because Electricity fees went up for beginning to apply summer electricity rates on June 1. Besides, prices for Vegetables, Fruits, Cereals & Cereal Products and Fish & Shellfish increased 5.62%, 2.03%, 1.18% and 0.69% respectively, while prices of Clothing moved down 2.28% for promotion. The headline CPI excluding Fruits, Vegetables, Fish, Shellfish and Energy, i.e. core CPI, increased 0.18%.

The annual change of CPI in June 2011, comparing with the same month of 2010, was 1.93%. Food prices rose 3.34%, of which prices of Fruits, Eggs and Fish & Shellfish went up 21.30%, 9.21% and 6.17% separately, prices of Cereals & Cereal Products, Edible Oil and Meat increased 5.35%, 5.12% and 3.32% individually, whereas Vegetables prices declined 7.79%. Fuels & Lubricants advanced 10.77% which brought Transportation & Communication prices to go up 2.63%. Education & Entertainment prices moved up 0.89% for prices of tour fees of traveling oversea became expensive. In addition, Housing prices rose 0.87% for prices of Gas, Household Appliances and Residential Rent moved up 3.68%, 2.36% and 0.37% separately. The General Index excluding Fruits and Vegetables increased 1.69%, the core CPI rose 1.23%.

For the first half year of 2011, the CPI increased 1.45% over the same period of previous year, as prices of Commodity went up 2.46% and Service moved up 0.66%. The core CPI increased 0.99%.



CPI for Households in Different Disposable Income Groups

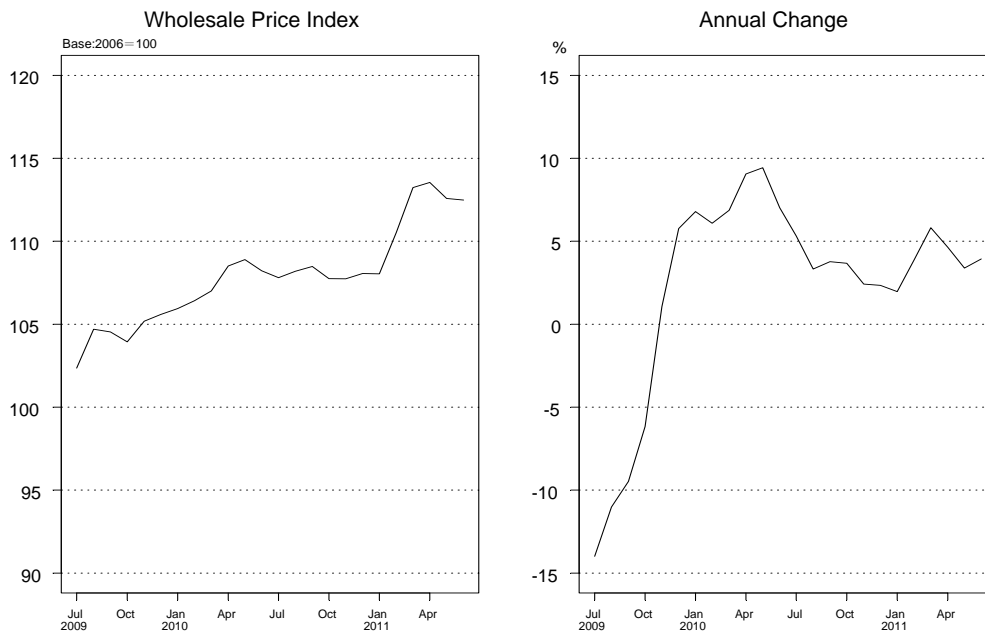
In June 2011, the CPI for Lowest 20% Disposable Income Group went up 1.90% comparing with the same month of 2010, CPI for Middle 60% Disposable Income Group and CPI for Highest 20% Disposable Income Group advanced 1.93% and 1.89% respectively.

Wholesale Price Indices (WPI)

The WPI in June 2011 decreased 0.09% from previous month, mainly because prices of Fishery Products, Petroleum & Coal Products and Chemical Material went down 6.06%, 1.89% and 1.25% separately. Domestic Sales Excluding Imports and Exports prices declined 0.22% and 0.11% respectively, while Imports prices moved up 0.07%.

The annual change of WPI in June 2011, comparing with the same month of 2010, was 3.94%. Mainly because prices of Crude Petroleum & Natural Gas, Petroleum & Coal Products, Chemical Material and Basic Metal went up 30.49%, 22.00%, 16.42% and 6.24% respectively, whereas prices of Electronic Parts & Components decreased 10.45%. Domestic Sales Excluding Imports and Imports prices rose 6.40% and 7.26% separately, while Exports prices moved down 1.89%.

For the first half year of 2011, the WPI increased 3.94% compared with the same period of previous year, of which the Import prices went up 7.03%, whereas Export prices moved down 1.21%.



Statistical Tables

- Table1 The Changes of Consumer Price Indices
- Table2 The Changes of Wholesale Price Indices
- Table3 The Changes of Import Price Indices
- Table4 The Changes of Export Price Indices

For Further Information:

Statistics Database: <http://eng.stat.gov.tw/>

DGBAS news releases on the Internet: <http://eng.dgbas.gov.tw/>

Tel: +886-2-23803449; Fax: +886-2-23803465

Table 1 The Changes of Consumer Price Indices

June 2011

Groups	Weight (%)	Index of June 2011 (2006=100)	Compared with Previous Month (%)	Compared with the Same Month of Previous Year (%)	The First Six Months of 2011 Compared with the Same Period of Previous Year (%)
General Index	1,000.00	107.35	0.61	1.93	1.45
Basic Group					
1. Food	260.82	114.47	0.88	3.34	2.43
Cereals & Cereal Products	19.72	122.06	1.18	5.35	2.85
Meat	23.08	124.31	0.03	3.32	4.22
Eggs	2.00	118.38	1.07	9.21	1.69
Fish & Shellfish	16.71	141.84	0.69	6.17	7.69
Vegetables	24.81	89.70	5.62	-7.79	-4.19
Fruits	27.59	110.07	2.03	21.30	8.08
Edible Oil	1.70	147.59	1.03	5.12	4.05
2. Clothing	41.72	112.01	-2.28	2.82	2.32
Garments	26.97	110.60	-3.56	3.35	2.64
3. Housing	279.47	104.15	1.31	0.87	0.66
Residential Rent	185.40	100.93	0.02	0.37	0.32
Maintenance & Repairs	14.78	110.49	0.32	2.46	2.05
Household Appliances	27.89	107.00	0.05	2.36	1.77
Water, Electricity & Gas Supply	36.87	117.61	7.94	1.55	0.69
Gas	9.70	126.64	1.07	3.68	0.95
4. Transportation & Communication	140.42	104.81	-0.25	2.63	1.90
Fuels & Lubricants	32.55	121.69	-0.60	10.77	8.49
Communication Fee	31.77	91.14	-0.31	-4.58	-4.75
5. Medicines & Medical Care	47.41	109.70	0.21	2.24	1.74
Medicines & Health Food	10.62	131.77	0.65	7.04	6.74
6. Education & Entertainment	171.48	100.28	0.57	0.89	0.68
Educational Expense	111.25	98.27	-0.02	0.06	-0.24
Entertainment Expense	60.22	103.91	1.60	2.34	2.30
7. Miscellaneous	58.68	111.34	0.81	0.80	0.91
Tobacco & Betelnut	14.65	134.65	-0.06	3.14	2.23
Commodity and Service Groups					
1. Commodity	437.11	111.48	0.87	3.34	2.46
(Excluding Food)	264.95	108.85	0.68	2.74	1.99
Non-durable Consumer Goods	299.12	116.63	1.51	4.21	3.27
(Excluding Food)	126.96	118.36	2.01	4.18	3.46
Semi-durable Consumer Goods	62.85	107.76	-1.53	2.54	1.76
Durable Consumer Goods	75.14	92.47	0.03	-0.16	-0.84
2. Service	562.89	103.92	0.41	0.81	0.66
Food	88.66	112.67	0.37	1.61	1.06
Housing	209.54	100.90	0.26	0.40	0.39
Transportation & Communication	76.99	99.59	-0.09	-0.57	-0.82
Medical Care	33.02	103.72	0.00	0.55	0.07
Education & Entertainment	129.64	106.69	0.70	1.81	1.84
Miscellaneous	23.83	99.63	2.38	-0.01	0.20
Special Groups					
General Index Excluding Fruits & Vegetables	947.60	107.72	0.47	1.69	1.39
General Index Excluding Food	739.18	104.74	0.51	1.40	1.09
General Index Excluding Fruits, Vegetables, Fish, Shellfish & Energy	866.64	106.10	0.18	1.23	0.99

Note: 1.includes nannies, housecleaning expenses and services paid for keeping household running efficiently.

2.All data are subject to revision 3 months after original publication due to late reports and corrections

Table 2 The Changes of Wholesale Price Indices

June 2011

Groups	Weight (%)	Index of June 2011 (2006=100)	Compared with Previous Month (%)	Compared with the Same Month of Previous Year (%)	The First Six Months of 2011 Compared with the Same Period of Previous Year (%)
General Index	1,000.00	112.48	-0.09	3.94	3.94
Domestic Sales Excluding Imports	307.86	118.94	-0.22	6.40	5.94
Imports	327.09	122.90	0.07	7.26	7.03
Exports	365.05	96.03	-0.11	-1.89	-1.21
Basic Group					
1. Agriculture, Forestry, Fishing & Animal Husbandry Products	27.15	146.46	-1.38	13.06	10.25
(1) Farm Products	12.87	135.56	1.01	16.97	12.15
(2) Poultry & Livestock Products	6.60	139.48	0.70	4.21	5.18
(3) Forest Products	0.41	122.59	0.31	5.66	3.44
(4) Fishery Products	7.27	171.25	-6.06	14.95	11.98
2. Quarrying & Mineral Products	57.59	166.20	0.11	26.54	24.72
(1) Crude Petroleum & Natural Gas	45.78	158.02	-0.33	30.49	24.48
(2) Sand, Stone & Clay Quarrying	2.56	101.53	0.39	-2.28	-5.29
(3) Other Mineral Products	9.25	228.70	1.59	18.81	30.70
3. Manufacturing Products	890.99	106.57	-0.26	1.79	2.08
(1) Foods	18.50	133.39	-0.37	7.34	6.62
(2) Beverages	5.34	102.51	-0.11	-0.81	-1.30
(3) Tobaccos	2.49	119.48	0.03	2.09	2.33
(4) Textile Products	21.67	131.53	-1.26	13.68	19.28
(5) Wearing Apparel & Clothing Accessories	4.65	100.29	0.02	1.85	0.74
(6) Leather, Fur & Related Products	4.97	111.41	1.77	-1.13	0.25
(7) Wood & Bamboo Products	2.15	115.80	1.36	-2.65	0.19
(8) Pulp, Paper, Paper Products & Printed Matter	15.11	121.74	-0.15	-0.65	1.23
(9) Petroleum & Coal Products	54.63	143.51	-1.89	22.00	17.17
(10) Chemical Material	91.92	132.61	-1.25	16.42	14.64
(11) Chemical Products & Medical Goods	28.00	110.58	0.65	1.20	1.62
(12) Rubber & Plastic Products	22.42	115.89	0.01	1.99	2.01
(13) Non-metallic Mineral Products	13.93	106.47	0.41	-0.60	-1.09
(14) Basic Metal	84.77	126.14	-0.46	6.24	7.76
(15) Fabricated Metal Products	42.26	113.88	-0.70	-0.60	2.17
(16) Electronic Parts & Components	261.17	73.19	0.27	-10.45	-9.41
(17) Computer, Electronic & Optical Products	64.22	74.89	0.97	-8.76	-8.78
(18) Electrical Equipment	34.70	109.72	-0.30	2.35	2.46
(19) Machinery & Equipment	67.61	110.33	0.74	-0.47	-0.39
(20) Transport Equipment & Parts	34.78	108.32	0.15	0.71	1.04
(21) Furniture & Fixtures	5.20	106.27	0.05	-2.86	-1.22
(22) Miscellaneous Products	10.51	109.19	0.42	0.62	1.58
4. Water Supply, Electricity & Gas	24.28	133.49	6.25	0.92	0.54
By Stage of Processing					
1. Raw Materials	138.48	158.59	-0.71	21.36	19.15
2. Intermediate Materials	356.29	113.59	0.01	2.35	2.87
3. Finished Goods	140.17	110.94	0.58	1.95	1.36
(1) Capital Goods	53.38	107.47	0.99	-0.50	-0.50
(2) Consumer Goods	86.79	112.58	0.34	3.45	2.49
Special Groups					
Domestic Sales	634.95	120.71	-0.07	6.84	6.50
Domestic Products	672.91	107.32	-0.18	2.18	2.31
Non-Heavy Chemical Industrial Products	166.01	115.75	-0.12	2.84	4.05
Heavy Chemical Industrial Products	724.98	104.50	-0.30	1.52	1.58

Note: All data are subject to revision 3 months after original publication due to late reports and corrections by respondents.

Table 3 The Changes of Import Price Indices

June 2011

Groups	Weight (%)	Index of June 2011 (2006=100)	Compared with Previous Month (%)	Compared with the Same Month of Previous Year (%)	The First Six Months of 2011 Compared with the Same Period of Previous Year (%)
Basic Group (on N.T.D. Basis)					
General Index	1,000.00	122.90	0.07	7.26	7.03
1. Animal, Vegetable Products & Prepared Foods	34.64	150.71	-0.68	11.95	11.63
2. Mineral Products & Nonmetallic Mineral Products	208.51	167.87	-0.42	26.47	23.86
3. Textiles & Textile Articles	13.85	146.81	-1.38	24.30	34.22
4. Wood, Paper, Pulp & Articles Thereof	17.93	120.50	1.10	-3.06	0.51
5. Chemicals, Plastics, Rubber & Articles Thereof	147.68	122.59	0.01	7.11	6.36
6. Primary Metals & Articles Thereof	118.38	125.12	-0.22	6.95	7.38
7. Machinery, Optical & Precision Instruments	166.28	110.51	1.26	-1.33	-1.27
8. Electronic Machinery	258.41	79.01	0.34	-8.62	-7.66
9. Transportation Equipment & Parts	21.11	121.66	0.11	1.28	2.12
10. Miscellaneous Products	13.21	118.49	-0.24	-1.53	1.29
Basic Group (on U.S.D. Basis)					
General Index	1,000.00	138.73	-0.24	19.89	17.41
1. Animal, Vegetable Products & Prepared Foods	34.64	170.15	-0.99	25.13	22.45
2. Mineral Products & Nonmetallic Mineral Products	208.51	189.42	-0.73	41.37	35.88
3. Textiles & Textile Articles	13.85	165.71	-1.68	38.94	47.20
4. Wood, Paper, Pulp & Articles Thereof	17.93	136.03	0.78	8.35	10.27
5. Chemicals, Plastics, Rubber & Articles Thereof	147.68	138.41	-0.30	19.73	16.68
6. Primary Metals & Articles Thereof	118.38	141.34	-0.53	19.55	17.77
7. Machinery, Optical & Precision Instruments	166.28	124.72	0.95	10.29	8.31
8. Electronic Machinery	258.41	89.18	0.02	2.14	1.30
9. Transportation Equipment & Parts	21.11	137.30	-0.20	13.21	12.03
10. Miscellaneous Products	13.21	133.74	-0.55	10.07	11.12

Note: All data are subject to revision 3 months after original publication due to late reports and corrections by respondents.

Table 4 The Changes of Export Price Indices

June 2011

Groups	Weight (%)	Index of June 2011 (2006=100)	Compared with Previous Month (%)	Compared with the Same Month of Previous Year (%)	The First Six Months of 2011 Compared with the Same Period of Previous Year (%)
Basic Group (on N.T.D. Basis)					
General Index	1,000.00	96.03	-0.11	-1.89	-1.21
1. Animal, Vegetable Products & Prepared Foods	9.95	155.48	0.26	19.65	16.14
2. Textiles & Textile Articles	53.37	124.99	-0.53	6.88	8.40
3. Wood, Paper, Pulp & Articles Thereof	7.52	120.90	-0.32	-3.09	-1.89
4. Chemicals, Plastics, Rubber & Articles Thereof	123.31	121.64	-0.56	7.66	8.72
5. Primary Metals & Articles Thereof	111.70	111.07	-1.03	-1.19	2.81
6. Machinery, Optical & Precision Instruments	154.88	84.72	1.06	-6.90	-6.60
7. Electronic Machinery	424.79	72.50	0.17	-11.78	-11.04
8. Transportation Equipment & Parts	32.07	106.45	0.41	0.14	0.52
9. Miscellaneous Products	82.43	124.96	-0.63	18.64	14.93
Basic Group (on U.S.D. Basis)					
General Index	1,000.00	108.45	-0.44	9.70	8.41
1. Animal, Vegetable Products & Prepared Foods	9.95	175.55	-0.05	33.79	27.52
2. Textiles & Textile Articles	53.37	141.14	-0.84	19.52	18.97
3. Wood, Paper, Pulp & Articles Thereof	7.52	136.53	-0.63	8.36	7.66
4. Chemicals, Plastics, Rubber & Articles Thereof	123.31	137.38	-0.88	20.37	19.30
5. Primary Metals & Articles Thereof	111.70	125.48	-1.35	10.49	12.83
6. Machinery, Optical & Precision Instruments	154.88	95.65	0.74	4.10	2.50
7. Electronic Machinery	424.79	81.85	-0.15	-1.36	-2.38
8. Transportation Equipment & Parts	32.07	120.20	0.09	11.98	10.31
9. Miscellaneous Products	82.43	141.09	-0.94	32.64	26.13

Note: All data are subject to revision 3 months after original publication due to late reports and corrections by respondents.