



News Release

8:30 am (GMT +8)

July 5, 2012

DGBAS, Taipei

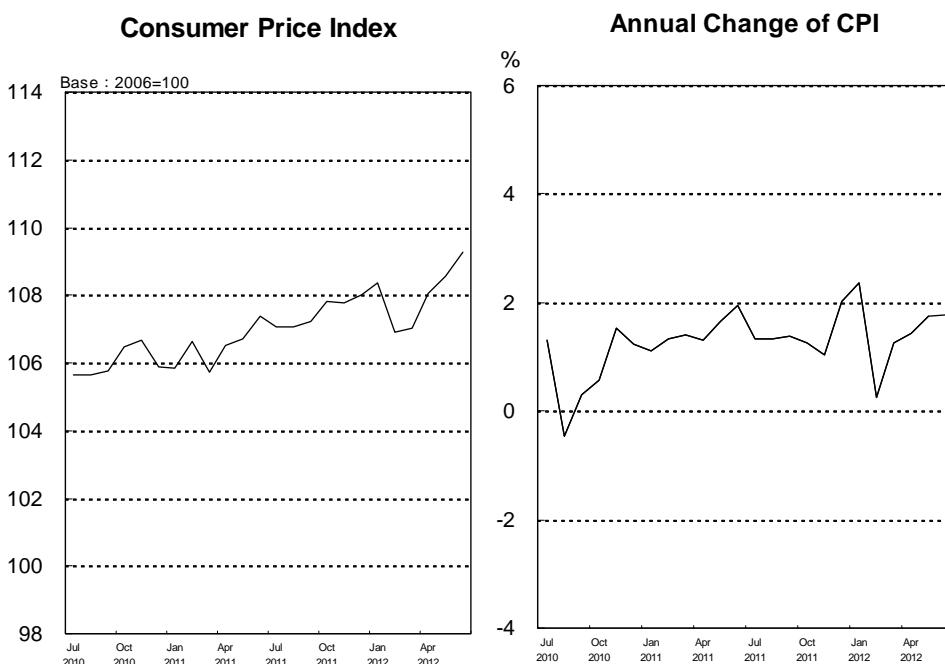
The Price Indices for June 2012

Consumer Price Indices (CPI)

The CPI in June 2012 (2006=100) increased 0.64% from the previous month, mainly because summer electricity rates took effect from June 1st and the first stage of permanent rate adjustments occurred on June 10th. In the meanwhile, Vegetables and Fruits prices went up 9.98% and 2.62% individually because of unstable weather, nevertheless, Fuels & Lubricants and Clothing prices moved down 3.45% and 2.66% respectively. The general CPI excluding Fruits, Vegetables, Fish, Shellfish and Energy, i.e. core CPI, increased 0.12%.

The annual change of CPI in June 2012, comparing with the same month of previous year, was 1.77%. Food prices went up 4.40%, of which Vegetables prices up 30.54%, Eggs and Dairy Products prices up 9.39% and 6.01% individually, Fish & Shellfish prices up 5.12%, Fruits prices up 4.16%, while Meat prices decreased 2.70%. Package tour expense brought Education & Entertainment prices to rise 1.24%. Gas prices advanced 5.31% and Electricity went up 3.13%, bringing Housing prices to rise 1.08%. However, Transportation & Communication prices declined 1.28%. The General Index excluding Fruits and Vegetables rose 1.08%, the core CPI moved up 0.82%.

For the first half of 2012, the CPI increased 1.47% over the same period of 2011, Commodity prices went up 2.57% and Service prices moved up 0.57%. The core CPI rose 0.86%.



CPI for Households in Different Disposable Income Groups

For June 2012, the CPI for Lowest 20% Disposable Income Group and CPI for Middle 60% Disposable Income Group increased 1.91% and 1.79% separately, comparing with the same month of 2011, furthermore, CPI for Highest 20% Disposable Income Group rose 1.71%.

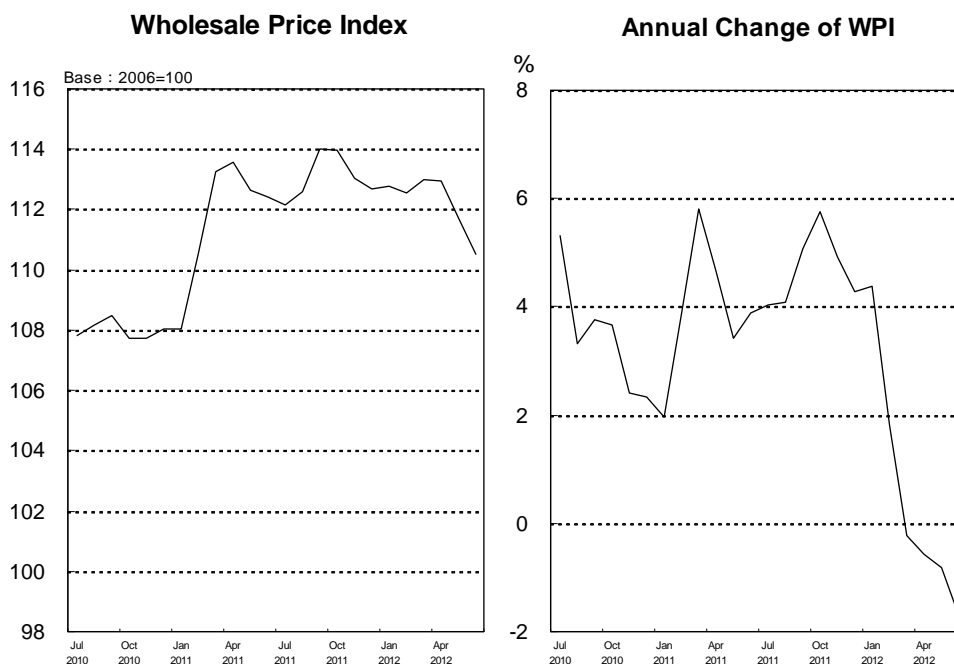
Wholesale Price Indices (WPI)

The WPI in June 2012 decreased 1.06% from the previous month, mainly because prices of Crude Petroleum & Natural Gas and Petroleum & Coal Products went down 9.98% and 7.01% respectively; furthermore, Chemical Material and Basic Metal moved down 4.89% and 1.46% individually. The WPI for Domestic Sales Excluding Imports declined 0.48%. Import price index went down 2.12%, and Export price index down 0.43%.

The annual change of WPI in June 2012, comparing with the same month of 2011, was minus 1.70%. Mainly because prices of Chemical Material, Basic Metal and Crude Petroleum & Natural Gas went down 10.59%, 10.24% and 7.46% separately, nevertheless, electricity rates hike and prices of Machinery & Equipment went up 3.77%. The WPI for Domestic Sales Excluding Imports fell 1.48%; Import price index declined 2.76%, and Export price index moved

down 0.69%.

For the first half of 2012, the WPI increased 0.45% compared with the same period of the previous year, of which the Import price index rose 1.63% and Export price index increased 0.54% respectively.



Statistical Tables

Table1 The Changes of Consumer Price Indices

Table2 The Changes of Wholesale Price Indices

Table3 The Changes of Import Price Indices

Table4 The Changes of Export Price Indices

For Further Information:

Statistics Database: <http://eng.stat.gov.tw/>

DGBAS news releases on the Internet: <http://eng.dgbas.gov.tw/>

Tel: +886-2-23803449; Fax: +886-2-23803465

Table 1 The Changes of Consumer Price Indices

June 2012

Groups	Weight (%)	Index of June 2012 (2006=100)	Compared with Previous Month (%)	Compared with the Same Month of Previous Year (%)	The First Six Months of 2012 Compared with the Same Period of Previous Year (%)
General Index	1,000.00	109.27	0.64	1.77	1.47
Basic Group					
1. Food	260.82	119.51	1.49	4.40	3.35
Cereals & Cereal Products	19.72	123.80	0.44	1.43	3.06
Meat	23.08	120.95	1.82	-2.70	-2.56
Eggs	2.00	129.50	-3.36	9.39	12.36
Fish & Shellfish	16.71	149.10	1.13	5.12	3.90
Vegetables	24.81	117.09	9.98	30.54	28.76
Fruits	27.59	114.67	2.62	4.16	-3.51
Dairy Products	10.51	134.38	0.10	6.01	6.38
Edible Oil	1.70	148.66	3.99	0.72	0.82
2. Clothing	41.72	114.71	-2.66	2.14	3.28
Garments	26.97	113.62	-4.02	2.34	2.89
3. Housing	279.47	105.28	1.63	1.08	0.96
Residential Rent	185.40	101.54	0.09	0.60	0.48
Household Operations ¹	14.53	101.26	5.09	1.03	0.14
Water, Electricity & Gas Supply	36.87	121.58	8.91	3.38	3.01
Gas	9.70	133.36	-1.50	5.31	8.96
Electricity	22.00	120.47	17.01	3.13	0.58
4. Transportation & Communication	140.42	103.45	-1.09	-1.28	-0.89
Fuels & Lubricants	32.55	124.20	-3.45	2.10	2.07
Communication Fee	31.77	82.14	0.00	-9.87	-8.95
5. Medicines & Medical Care	47.41	110.28	0.26	0.53	0.80
Medicines & Health Food	10.62	132.83	0.54	0.80	1.22
6. Education & Entertainment	171.48	101.52	0.28	1.24	0.59
Educational Expense	111.25	98.14	0.02	-0.14	-0.08
Entertainment Expense	60.22	107.67	0.71	3.63	1.75
7. Miscellaneous	58.68	113.43	-0.02	1.87	2.16
Tobacco & Betelnut	14.65	139.47	-1.50	3.58	4.09
Personal Care Services	14.78	99.98	2.05	0.30	1.35
Commodity and Service Groups					
1. Commodity	437.11	114.84	1.01	2.99	2.57
(Excluding Food)	264.95	110.32	0.27	1.31	1.59
Non-durable Consumer Goods	299.12	121.43	1.80	4.12	3.23
(Excluding Food)	126.96	121.22	1.47	2.43	2.25
Semi-durable Consumer Goods	62.85	108.93	-1.85	0.90	1.69
Durable Consumer Goods	75.14	91.77	-0.29	-0.76	0.07
2. Service	562.89	104.72	0.34	0.77	0.57
Food	88.66	115.40	0.41	2.42	2.13
Housing	209.54	101.52	0.42	0.61	0.45
Transportation & Communication	76.99	96.09	0.03	-3.51	-3.08
Medical Care	33.02	104.19	0.14	0.45	0.60
Education & Entertainment	129.64	109.13	0.30	2.29	1.52
Miscellaneous	23.83	100.39	1.16	0.76	1.50
Special Groups					
General Index Excluding Fruits & Vegetables	947.60	108.89	0.35	1.08	1.07
General Index Excluding Food	739.18	105.55	0.30	0.75	0.75
General Index Excluding Fruits, Vegetables, Fish, Shellfish & Energy	866.64	106.98	0.12	0.82	0.86

Note: 1.includes nannies, housecleaning expenses and services paid for keeping household running efficiently.

2.All data are subject to revision 3 months after original publication due to late reports and corrections by respondents.

Table 2 The Changes of Wholesale Price Indices

June 2012

Groups	Weight (%)	Index of June 2012 (2006=100)	Compared with Previous Month (%)	Compared with the Same Month of Previous Year (%)	The First Six Months of 2012 Compared with the Same Period of Previous Year (%)
General Index	1000.00	110.52	-1.06	-1.70	0.45
Domestic Sales Excluding Imports	307.86	116.86	-0.48	-1.48	-0.93
Imports	327.09	119.81	-2.12	-2.76	1.63
Exports	365.05	95.21	-0.43	-0.69	0.54
Basic Group					
1. Agriculture, Forestry, Fishing & Animal Husbandry Products	27.15	151.86	-0.43	3.69	3.61
(1) Farm Products	12.87	142.38	-1.07	5.15	1.61
(2) Poultry & Livestock Products	6.60	136.06	8.18	-2.67	-7.53
(3) Forest Products	0.41	106.99	2.89	-12.73	-13.46
(4) Fishery Products	7.27	182.98	-4.69	6.85	15.90
2. Quarrying & Mineral Products	57.59	157.13	-7.18	-6.45	7.06
(1) Crude Petroleum & Natural Gas	45.78	148.31	-9.98	-7.46	9.29
(2) Sand, Stone & Clay Quarrying	2.56	103.07	0.06	1.52	2.19
(3) Other Mineral Products	9.25	219.54	2.20	-4.01	0.05
3. Manufacturing Products	890.99	104.55	-0.89	-1.73	-0.41
(1) Foods	18.50	133.61	0.19	-0.01	0.08
(2) Beverages	5.34	106.04	0.28	3.55	3.36
(3) Tobaccos	2.49	131.98	0.00	10.17	8.74
(4) Textile Products	21.67	126.62	0.52	-3.17	-5.48
(5) Wearing Apparel & Clothing Accessories	4.65	107.03	0.92	5.95	7.20
(6) Leather, Fur & Related Products	4.97	116.33	0.78	4.69	5.51
(7) Wood & Bamboo Products	2.15	117.13	1.22	1.47	1.61
(8) Pulp, Paper, Paper Products & Printed Matter	15.11	116.93	0.30	-3.90	-4.67
(9) Petroleum & Coal Products	54.63	142.32	-7.01	-1.00	6.89
(10) Chemical Material	91.92	117.19	-4.89	-10.59	-5.30
(11) Chemical Products & Medical Goods	28.00	111.07	0.50	0.12	1.03
(12) Rubber & Plastic Products	22.42	116.83	-0.05	0.48	2.09
(13) Non-metallic Mineral Products	13.93	107.37	0.78	0.77	0.33
(14) Basic Metal	84.77	112.67	-1.46	-10.24	-8.41
(15) Fabricated Metal Products	42.26	110.86	0.34	-2.70	-2.62
(16) Electronic Parts & Components	261.17	74.81	1.16	2.16	1.07
(17) Computer, Electronic & Optical Products	64.22	76.43	-0.14	2.02	2.95
(18) Electrical Equipment	34.70	109.61	0.20	0.27	-0.48
(19) Machinery & Equipment	67.61	114.72	1.35	3.77	4.20
(20) Transport Equipment & Parts	34.78	111.36	0.75	2.81	2.25
(21) Furniture & Fixtures	5.20	111.50	1.25	4.86	4.77
(22) Miscellaneous Products	10.51	113.09	1.14	3.80	3.26
4. Water Supply, Electricity & Gas	24.28	142.82	12.78	6.99	2.28
By Stage of Processing					
1. Raw Materials	138.48	146.19	-5.64	-7.96	0.67
2. Intermediate Materials	356.29	112.03	0.11	-1.30	-0.81
3. Finished Goods	140.17	114.70	0.63	3.39	3.10
(1) Capital Goods	53.38	110.94	0.70	3.21	3.65
(2) Consumer Goods	86.79	116.50	0.59	3.49	2.78
Special Groups					
Domestic Sales	634.95	118.12	-1.34	-2.15	0.40
Domestic Products	672.91	105.91	-0.45	-1.10	-0.21
Non-Heavy Chemical Industrial Products	166.01	115.59	0.44	0.11	-0.23
Heavy Chemical Industrial Products	724.98	102.04	-1.23	-2.21	-0.46

Note: All data are subject to revision 3 months after original publication due to late reports and corrections by respondents.

Table 3 The Changes of Import Price Indices

June 2012

Groups	Weight (%)	Index of June 2012 (2006=100)	Compared with Previous Month (%)	Compared with the Same Month of Previous Year (%)	The First Six Months of 2012 Compared with the Same Period of Previous Year (%)
Basic Group (on N.T.D. Basis)					
General Index	1,000.00	119.81	-2.12	-2.76	1.63
1. Animal, Vegetable Products & Prepared Foods	34.64	151.09	0.35	0.12	-1.01
2. Mineral Products & Nonmetallic Mineral Products	208.51	159.01	-7.15	-6.24	6.76
3. Textiles & Textile Articles	13.85	132.71	-0.02	-10.03	-10.73
4. Wood, Paper, Pulp & Articles Thereof	17.93	113.73	0.92	-5.48	-5.20
5. Chemicals, Plastics, Rubber & Articles Thereof	147.68	116.93	-1.95	-4.80	-0.76
6. Primary Metals & Articles Thereof	118.38	110.99	-1.58	-10.65	-8.77
7. Machinery, Optical & Precision Instruments	166.28	114.51	0.93	3.48	4.00
8. Electronic Machinery	258.41	82.04	1.43	3.89	3.12
9. Transportation Equipment & Parts	21.11	127.56	1.58	4.85	3.38
10. Miscellaneous Products	13.21	121.02	-0.60	2.34	1.52
Basic Group (on U.S.D. Basis)					
General Index	1,000.00	130.28	-3.59	-6.33	-0.37
1. Animal, Vegetable Products & Prepared Foods	34.64	164.32	-1.15	-3.55	-2.96
2. Mineral Products & Nonmetallic Mineral Products	208.51	172.84	-8.54	-9.68	4.66
3. Textiles & Textile Articles	13.85	144.30	-1.51	-13.33	-12.46
4. Wood, Paper, Pulp & Articles Thereof	17.93	123.68	-0.59	-8.96	-7.09
5. Chemicals, Plastics, Rubber & Articles Thereof	147.68	127.17	-3.42	-8.29	-2.72
6. Primary Metals & Articles Thereof	118.38	120.78	-3.05	-13.93	-10.55
7. Machinery, Optical & Precision Instruments	166.28	124.49	-0.59	-0.32	1.93
8. Electronic Machinery	258.41	89.21	-0.09	0.08	1.10
9. Transportation Equipment & Parts	21.11	138.68	0.06	1.01	1.33
10. Miscellaneous Products	13.21	131.58	-2.09	-1.41	-0.48

Note: All data are subject to revision 3 months after original publication due to late reports and corrections by respondents.

Table 4 The Changes of Export Price Indices

June 2012

Groups	Weight (%)	Index of June 2012 (2006=100)	Compared with Previous Month (%)	Compared with the Same Month of Previous Year (%)	The First Six Months of 2012 Compared with the Same Period of Previous Year (%)
Basic Group (on N.T.D. Basis)					
General Index	1,000.00	95.21	-0.43	-0.69	0.54
1. Animal, Vegetable Products & Prepared Foods	9.95	169.20	-3.56	8.80	24.16
2. Textiles & Textile Articles	53.37	121.79	0.74	-1.11	-2.22
3. Wood, Paper, Pulp & Articles Thereof	7.52	119.42	1.16	-1.06	-4.57
4. Chemicals, Plastics, Rubber & Articles Thereof	123.31	113.34	-1.84	-6.45	-3.79
5. Primary Metals & Articles Thereof	111.70	103.32	0.31	-6.64	-6.79
6. Machinery, Optical & Precision Instruments	154.88	86.72	1.34	2.10	2.38
7. Electronic Machinery	424.79	74.86	1.08	3.21	1.97
8. Transportation Equipment & Parts	32.07	109.85	1.18	3.19	2.61
9. Miscellaneous Products	82.43	121.64	-6.65	-2.64	7.54
Basic Group (on U.S.D. Basis)					
General Index	1,000.00	103.57	-1.92	-4.34	-1.44
1. Animal, Vegetable Products & Prepared Foods	9.95	184.00	-5.02	4.80	21.68
2. Textiles & Textile Articles	53.37	132.45	-0.78	-4.76	-4.16
3. Wood, Paper, Pulp & Articles Thereof	7.52	129.89	-0.36	-4.70	-6.46
4. Chemicals, Plastics, Rubber & Articles Thereof	123.31	123.30	-3.31	-9.89	-5.69
5. Primary Metals & Articles Thereof	111.70	112.43	-1.20	-10.08	-8.63
6. Machinery, Optical & Precision Instruments	154.88	94.30	-0.19	-1.67	0.35
7. Electronic Machinery	424.79	81.40	-0.44	-0.59	-0.05
8. Transportation Equipment & Parts	32.07	119.47	-0.35	-0.61	0.58
9. Miscellaneous Products	82.43	132.29	-8.06	-6.23	5.41

Note: All data are subject to revision 3 months after original publication due to late reports and corrections by respondents.